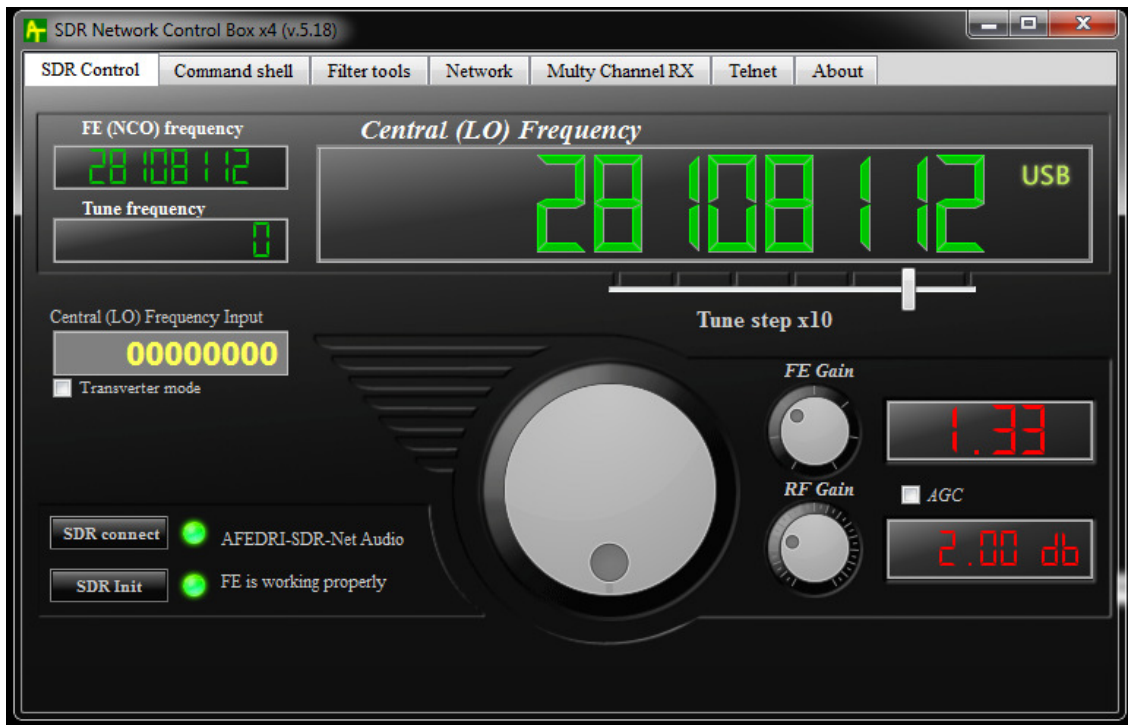


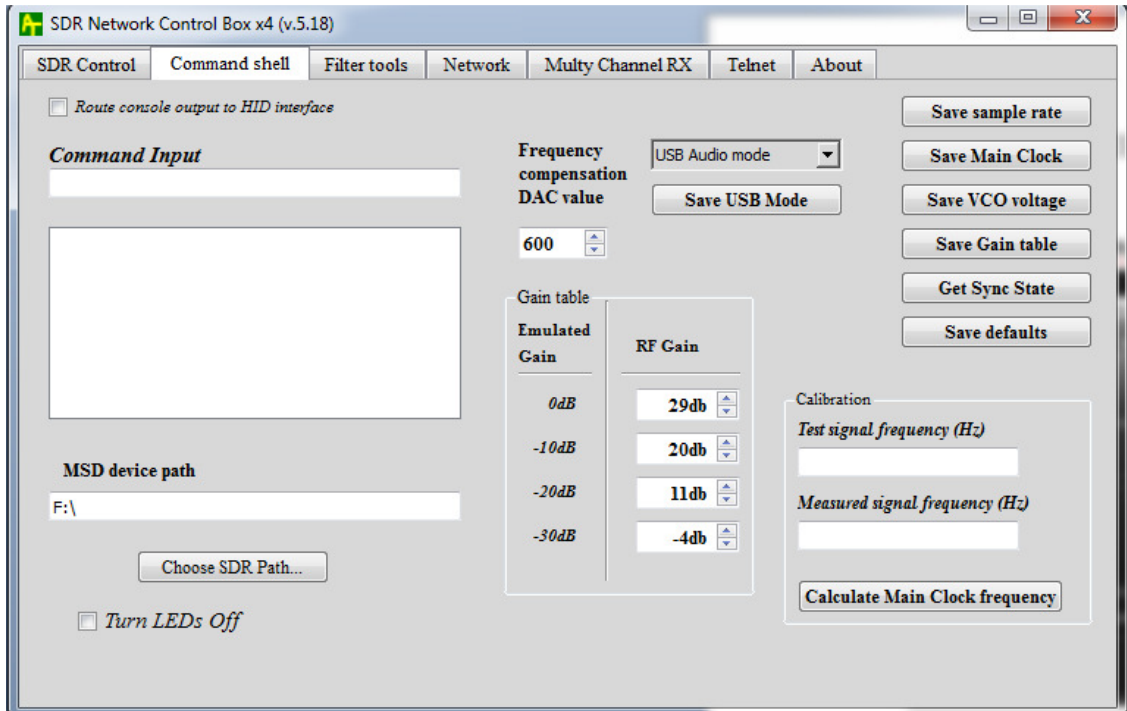
How to change AFEDRI SDR sample rate for USB audio mode!

Please take in account that when you are using AFEDRI SDR in USB audio mode (USB connection), there the special procedure should be done to change USB audio sample rate, it will be described below. You cannot set sample rate for USB audio mode by any other way!

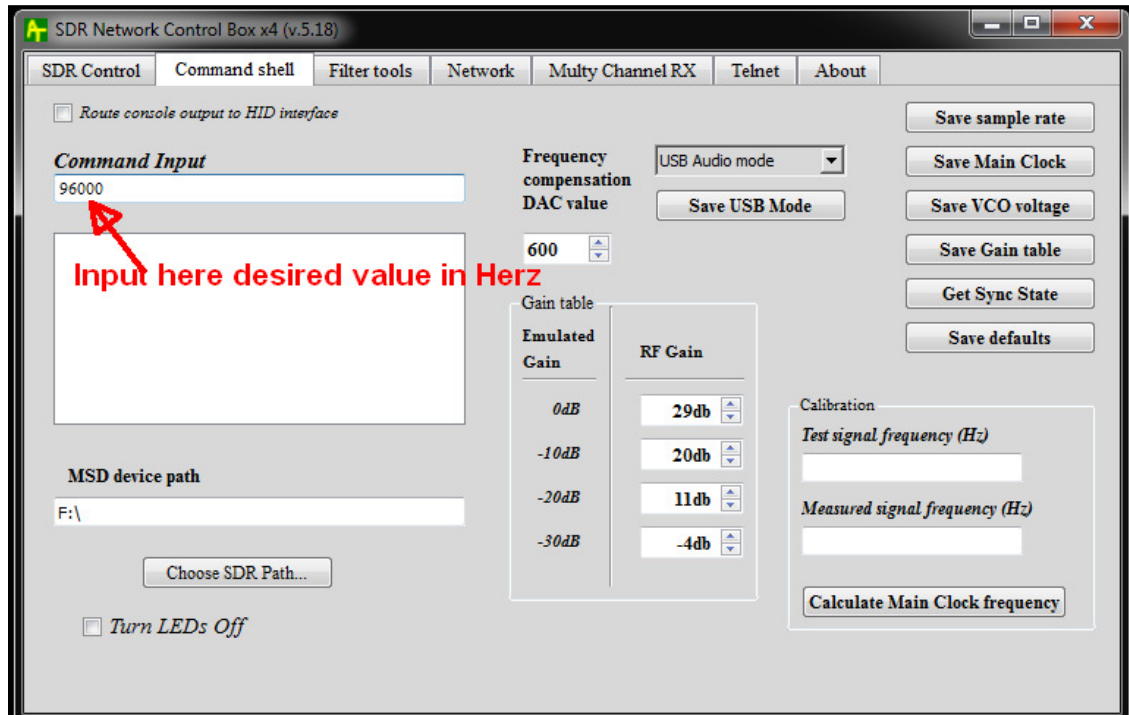
1. Start SDR_Network_Control_Box



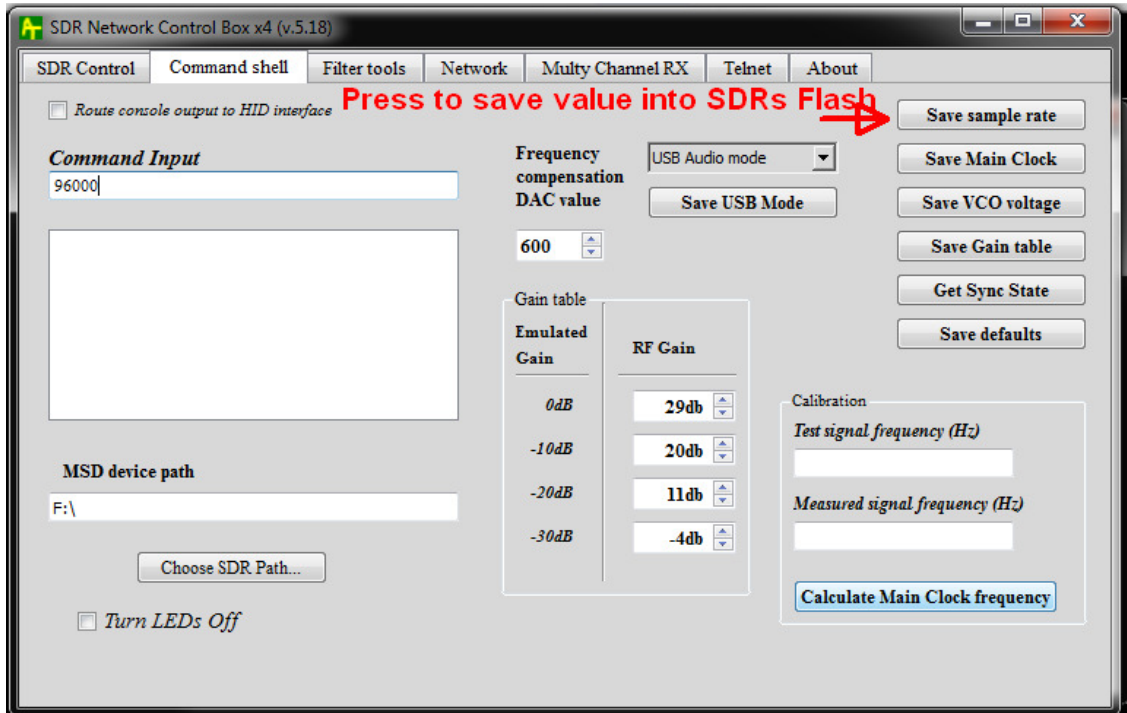
2. Go to “Command shell” tab



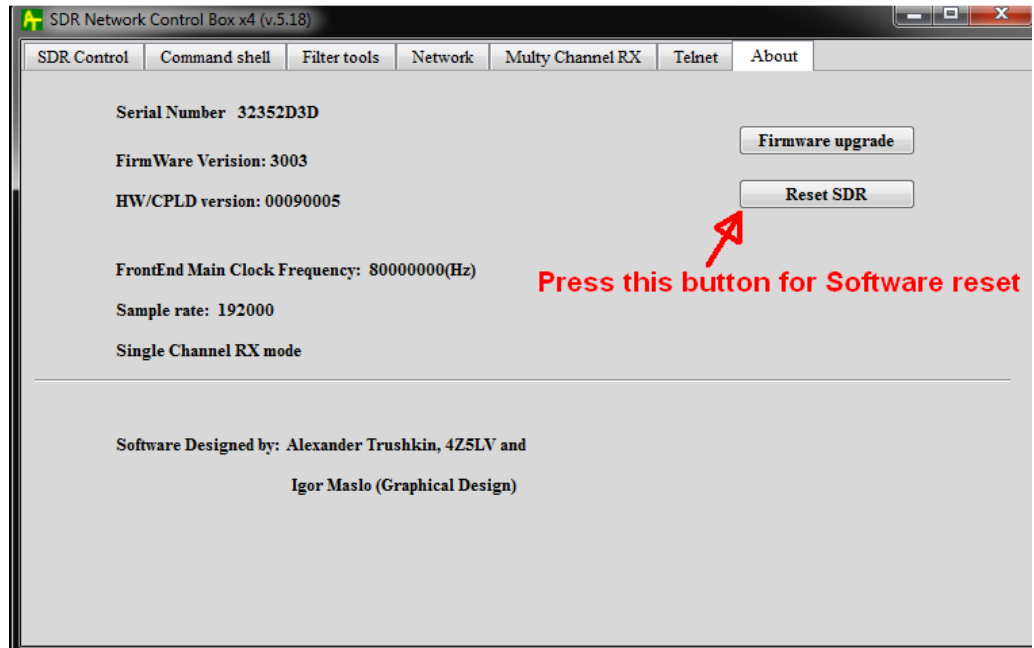
3. Insert desired sample rate value in Herz into “Command Input” edit box.



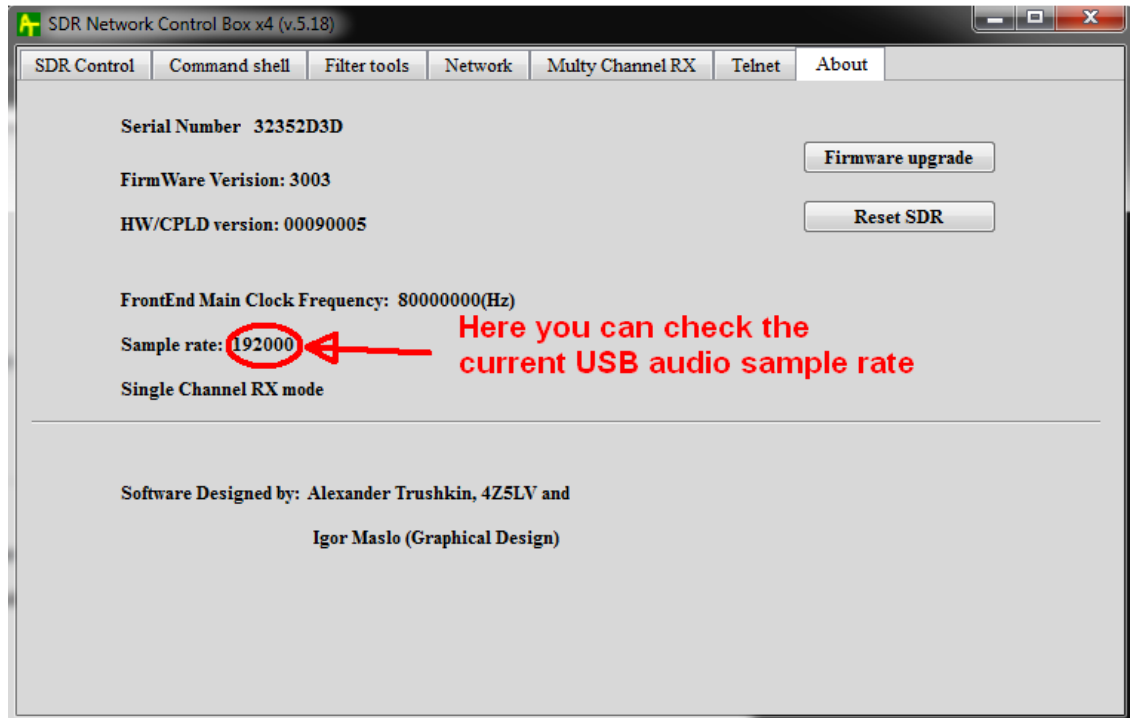
4. To save value into SDR internal Flash memory, press “Save sample rate” button



5. To make the new sample rate parameters actual, you have to reset SDR. You can do that by two alternative ways:
 - a. Disconnect USB cable of SDR and connect it again
 - b. Go to “About” and press “Reset SDR” button.Close SDR_Network_Control_Box right after this job.

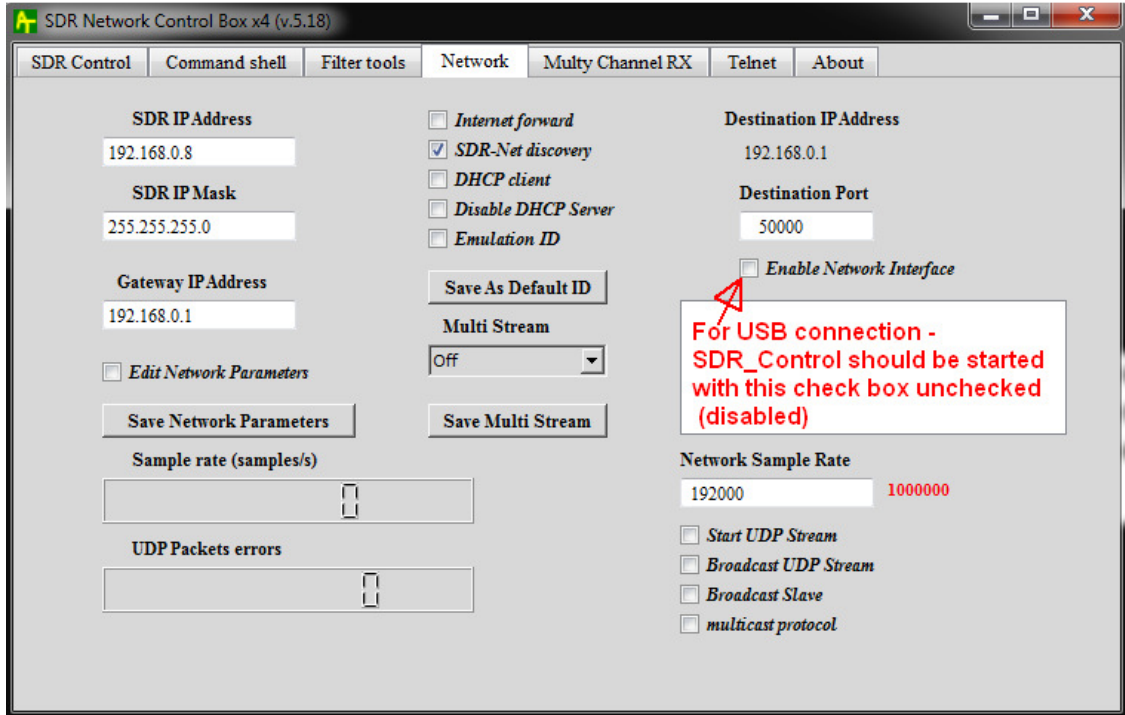


6. Please wait till Windows will detect the new USB device and give it possibility to reinstall required drivers automatically.
7. To check the current value of USB audio sample rate you can use SDR_Network_Control_Box application, “About” tab

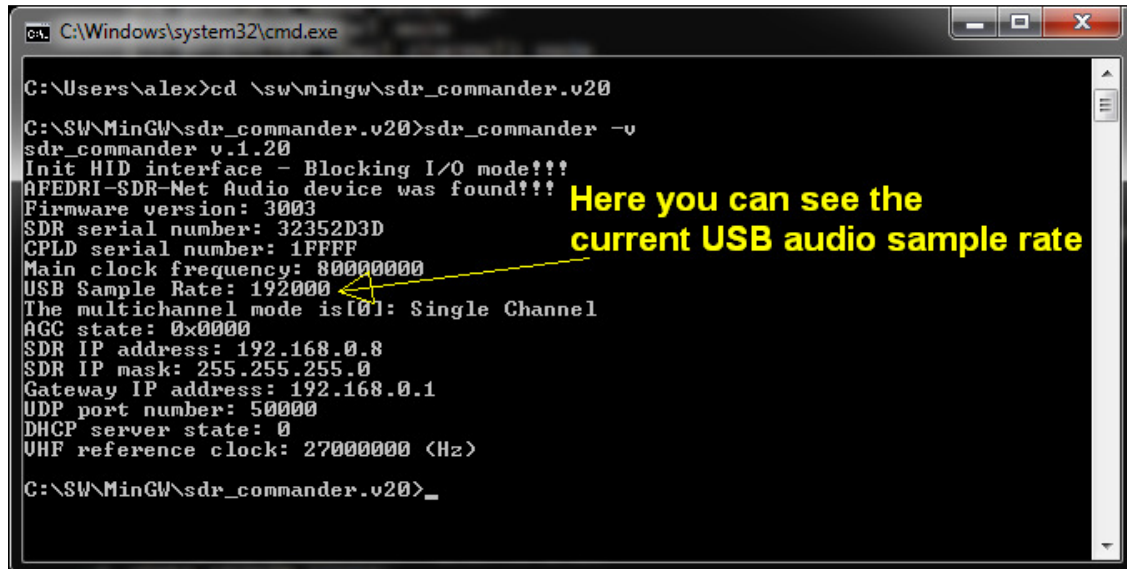


Note: SDR_Network_Control_Box application should be configured for USB connection (“Enable Network Interface” on “Network” tab - disabled).

See the screenshot below:



Or alternatively you can use sdr_commander utility, running it in Command shell window (DOS shell)



```
C:\Windows\system32\cmd.exe

C:\Users\alex>cd \sw\mingw\sdr_commander.v20

C:\SW\MinGW\sdr_commander.v20>sdr_commander -v
sdr_commander v.1.20
Init HID interface - Blocking I/O mode!!!
AFEDRI-SDR-Net Audio device was found!!!
Firmware version: 3003
SDR serial number: 32352D3D
CPLD serial number: 1FFFF
Main clock frequency: 800000000
USB Sample Rate: 192000
The multichannel mode is[0]: Single Channel
AGC state: 0x0000
SDR IP address: 192.168.0.8
SDR IP mask: 255.255.255.0
Gateway IP address: 192.168.0.1
UDP port number: 50000
DHCP server state: 0
VHF reference clock: 27000000 <Hz>

C:\SW\MinGW\sdr_commander.v20>_
```

Here you can see the current USB audio sample rate